



INTERPIPE

INTREPID SERIES PREMIUM CONNECTIONS

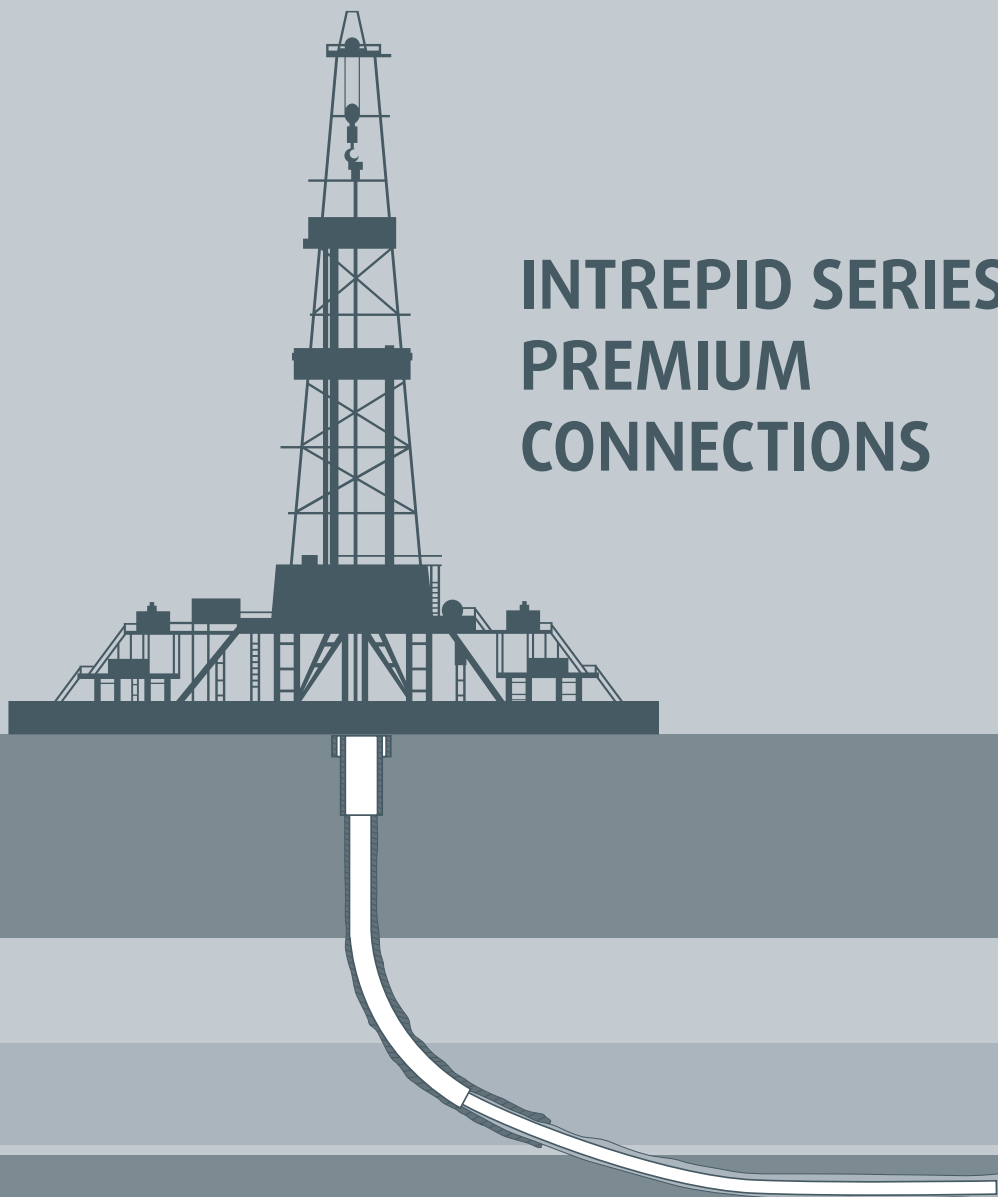


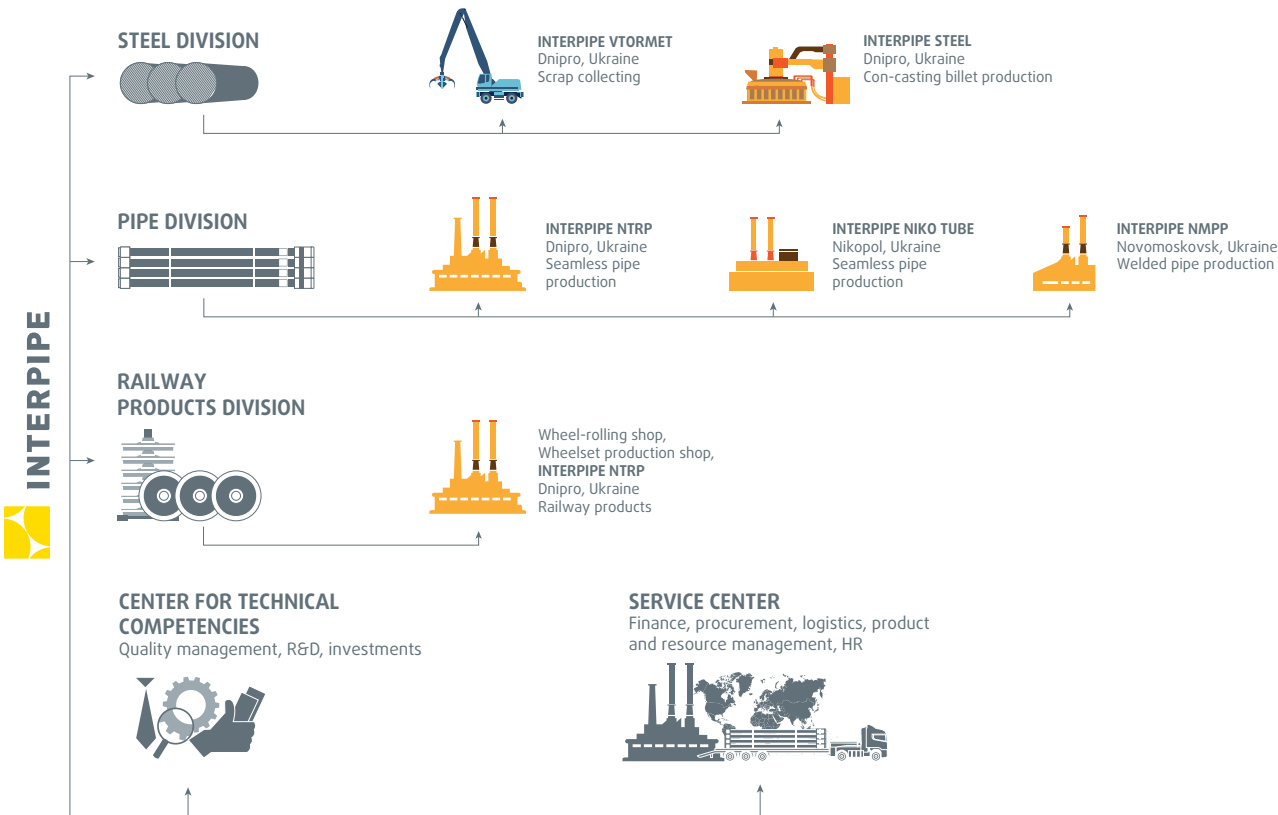
TABLE OF CONTENTS

INTREPID SP High Performance Semi Premium Connection	6
INTREPID M Threaded&Coupled «T&C» Premium Connection	8
INTREPID F True Flush Premium Connection.	10
BD (Best Dry) dope-free solution.. .. .	12
Field Service Support.. .. .	14

INTERPIPE – A RELIABLE SUPPLIER OF TUBULAR SOLUTIONS

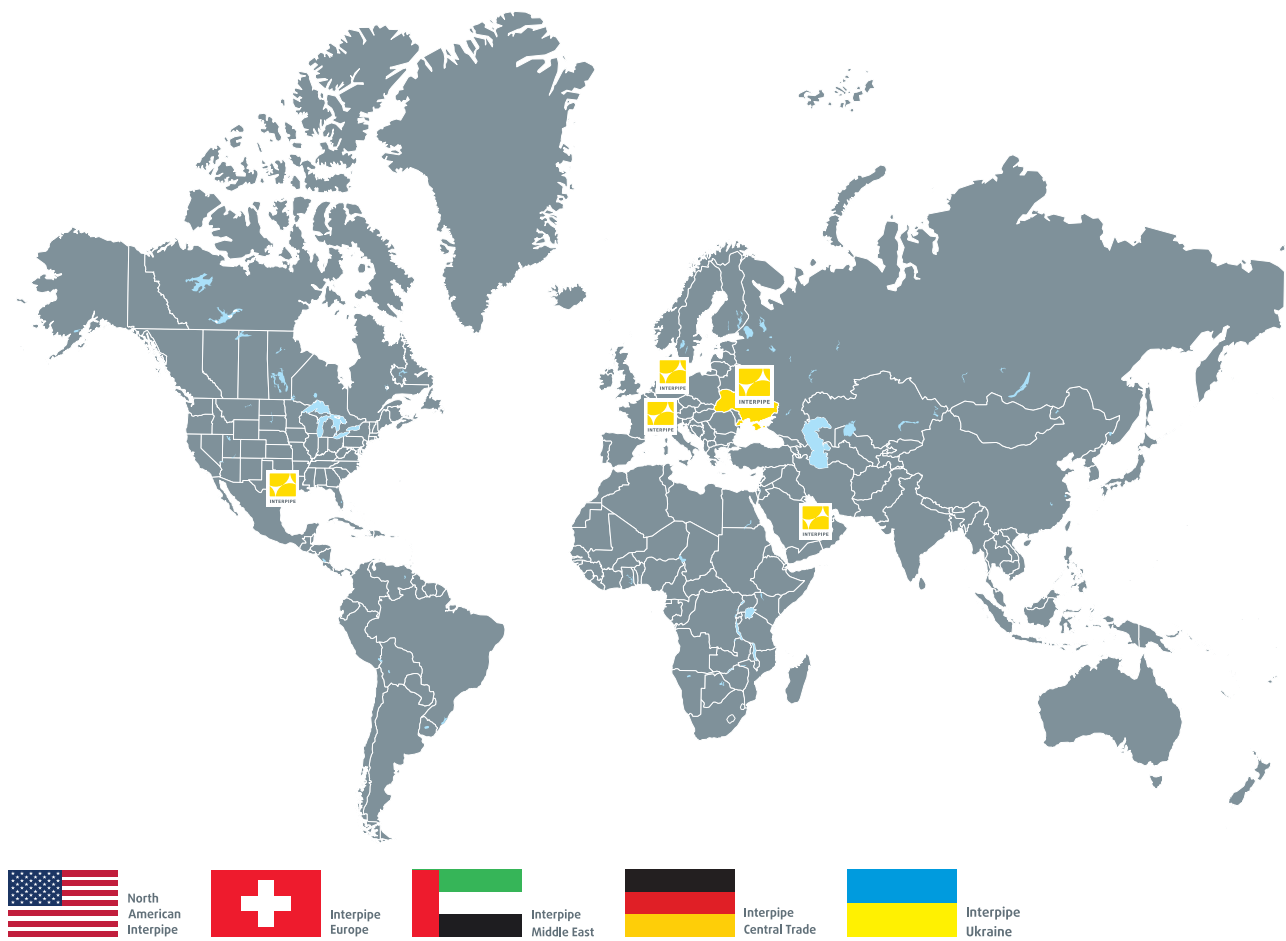
Interpipe is a fully integrated manufacturer and supplier of steel pipes for the oil and gas, mechanical, and construction industries. The company is one of the TOP-10 largest producers of seamless pipes in the world.

The structure of Interpipe includes 5 plants located in the Dnipropetrovsk region – one of the largest industrial centers of Ukraine. The company consists of 3 divisions: steel, pipe, and railway products. Interpipe controls the quality of products at each stage: from the production of raw materials to the delivery of finished products to customers.



SUPPLIES AROUND THE WORLD – KEY MARKETS

Interpipe's products are marketed in more than 80 countries around the world.
Commercial offices are established in Ukraine, Europe, the Middle East, CIS and North America.



PREMIUM AND SEMI PREMIUM CONNECTIONS

Oil and gas drilling conditions are getting more complex. The amount of directional wells is increasing, resulting in more stringent requirements. Threaded connections play a key role in the reliable operation of a string.

INTREPID is a series of premium connections for steel pipes, designed by Interpipe for oil and gas operations in difficult geological environments.

INTREPID series is sold in the US exclusively by the company's trade office – North American Interpipe.

INTREPID SP HIGH PERFORMANCE SEMI PREMIUM CONNECTION

INTREPID SP is a proven Semi Premium Connection developed to face customer challenges.

INTREPID SP allows to combine drilling with casing assure high torque resistance. The connection is fully interchangeable with API BUTTRESS connection, casing accessories.

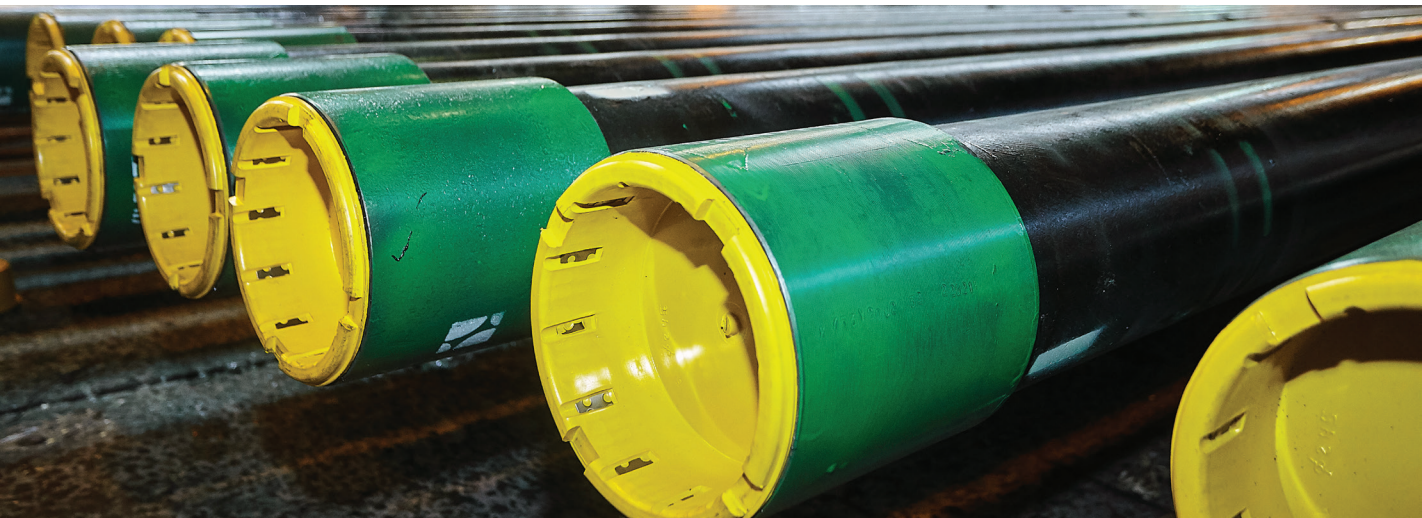
This connection allows an angle of deviation higher than 20° / 100 ft.

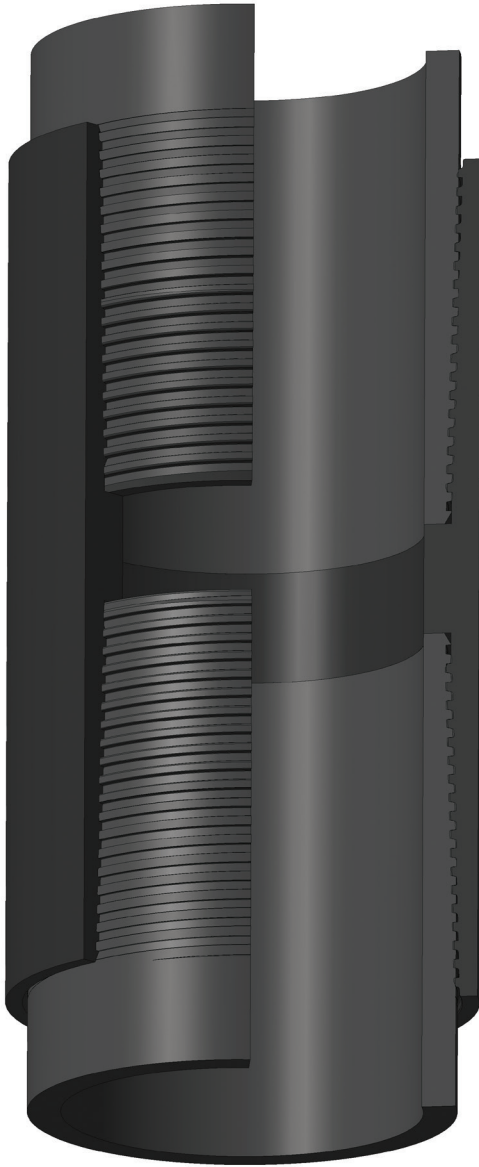
AVAILABLE SIZES:

4 1/2" & 5 1/2"

STEEL GRADES:

API
Sour Service
High Collapse





INTREPID SP SEMI PREMIUM CONNECTION: APPLICATIONS AND FEATURES

WELL APPLICATIONS:

- Drilling with Casing
- Shale
- Intermediate casing
- Production casing

WELL TYPE:

- Deviated
- Vertical

CONNECTION FEATURES:

- "Pin-to-shoulder" design
- Fully interchangeable with API Buttress connection, casing accessories
- True ID

OPTIONS:

- High operational Torque
- Enhanced structural capacity

INTREPID M – CAL IV CERTIFIED GAS-TIGHT CONNECTION

INTREPID-M is a proprietary premium connection certified in accordance with ISO 13679 for CAL IV requirement level.

This connection guarantees safe operation under severe pressure and temperature. It can withstand up to 100% tensile, compression, internal and external pressure loads.

This connection allows an angle of deviation up to 40° / 30m.

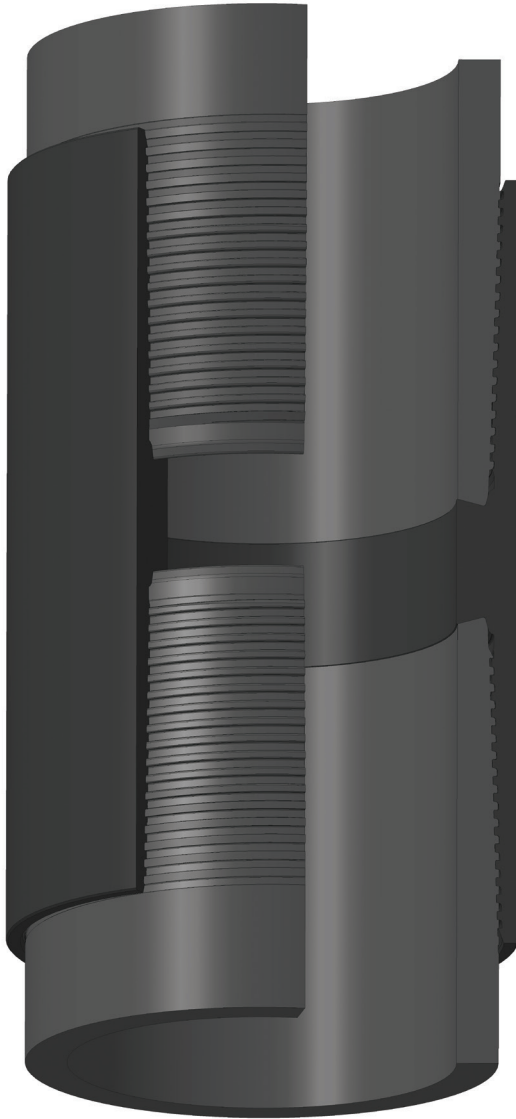
SIZE RANGE:

Product	Mm	In
Casing	114.3 – 339.7	4 1/2" – 13 3/8"
Tubing	60.3 – 114.3	2 3/8" – 4 1/2"

STEEL GRADES:

API
Sour Service
High Collapse





INTREPID M T&C PREMIUM CONNECTION: APPLICATIONS AND FEATURES

WELL APPLICATIONS:

- Intermediate casing
- Production casing
- Tie-back
- Liner
- Tubing

WELL TYPE:

- Vertical
- Directional
- Horizontal

CONNECTION FEATURES:

- Threaded & Coupled (T&C)
- “Hook” thread profile
- “Metal-to-metal” gas tight system
- True ID
- Dope pocket

OPTIONS:

- Available with BEST DRY solution
- High Collapse
- High Torque
- Special Clearance
- Special Bevel

INTREPID F – CAL IV CERTIFIED GAS-TIGHT FLUSH JOINT

INTREPID F is a proprietary gas tight true flush premium connection certified in accordance with ISO 13679 for CAL IV requirement level.

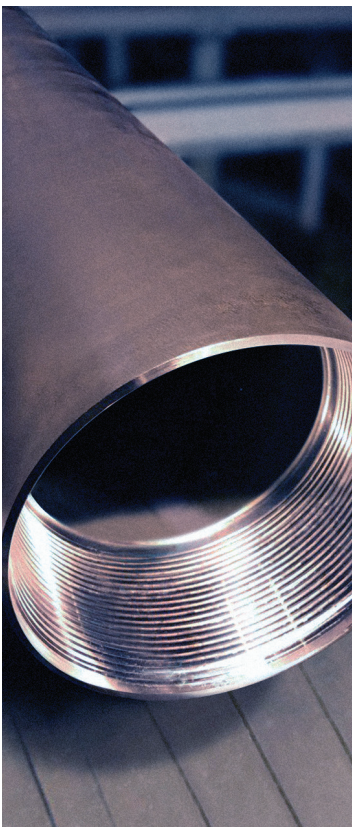
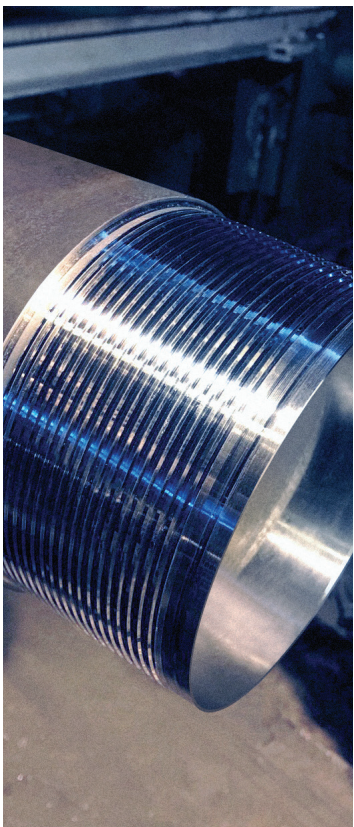
This design allows the connection usage in clearance applications where T&C connections cannot be used.

SIZE RANGE:

Product	Mm	In
Casing	114.3 – 301.6	4 1/2" – 11 7/8"
Tubing	60.3 – 114.3	2 3/8" – 4 1/2"

STEEL GRADES:

API
Sour Service
High Collapse





INTREPID F TRUE FLUSH PREMIUM CONNECTION: APPLICATIONS AND FEATURES

WELL TYPE:

- Horizontal
- Vertical
- Directional

CONNECTION FEATURES:

- “Hook” thread profile
- Double “metal-to-metal” seal
- Dope pocket

INTERPIPE BEST DRY

Interpipe Best Dry is an environmentally friendly dry multi-layer coating solution designed to simplify running operations.

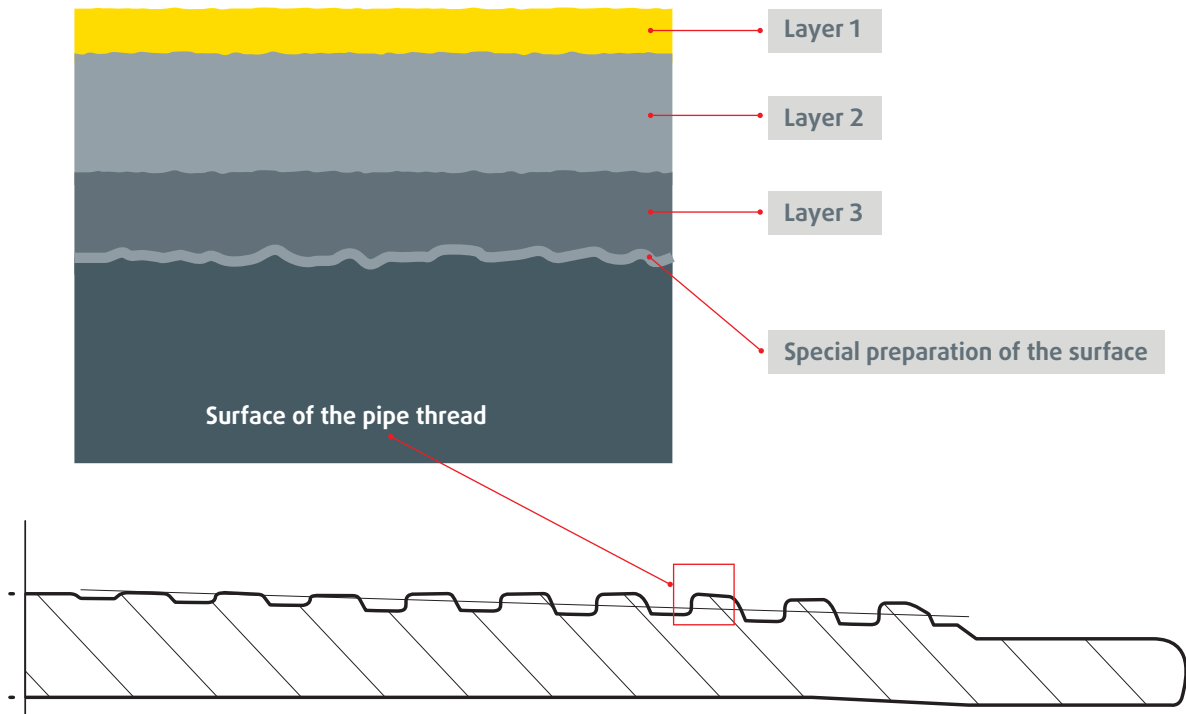
Best Dry is a Dope-Free thread solution, which allows multiple make ups&breaks. The multi-layer coating acts as both storage and running compound and provides high corrosion resistance and torque reductions.

DOPE-FREE THREAD SOLUTION

There is no need to clear storage compound and apply running compound before running in hole. Dope Free is an optimal solution for extreme temperatures, where storage compound clearing is complicated.



BEST DRY FEATURES



TECHNICAL FEATURES:

- Anti-corrosion protection
- Galling resistance
- Multiple make-ups/breaks
- Readiness to run downhole without any additional operations
- Drilling in H₂S and CO₂ environments
- Operating range: +180°C to -60°C
- No environmental pollution

24/7 FIELD SERVICE SUPPORT

Interpipe provides 24/7 Field Service Assistance for its customers around the world

THE MAIN TASKS OF THE INTERPIPE FIELD SERVICE TEAM ARE:

1. Field Inspection
 2. Running crew training
 3. Field Repair of minor damages
 4. Make up graphs interpretation
 5. Updating of pipes technical information (Data Sheets)
-



North American Interpipe
1800 West Loop South, Site 1350,
Houston, Texas, 77027, USA
Phone: **+1 713 333 0333**
Fax: **+1 713 333 0330**

www.interpipe.biz

2019